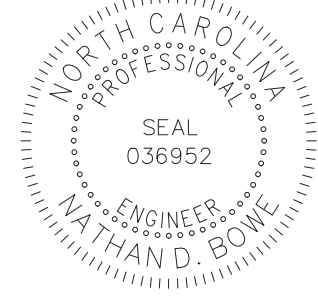


TOWN OF BRYSON CITY POWELL BILL MAP
 I HEREBY CERTIFY THAT THIS MAP ACCURATELY REPRESENTS THE STREET SYSTEM MAINTAINED BY THE TOWN OF BRYSON CITY, NORTH CAROLINA. THE DISTANCES SHOWN ARE CORRECT WITHIN A POSSIBLE ERROR OF 0.01 MILE.

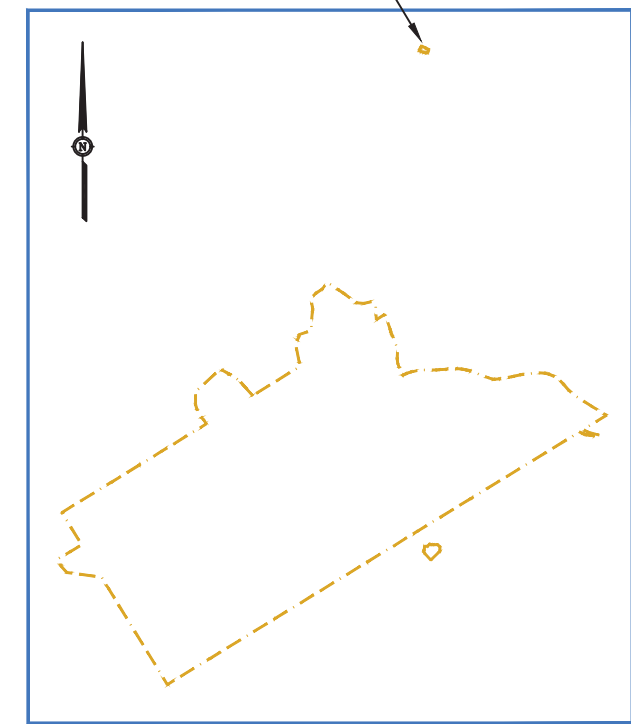
Nate Bowe 7/21/2025
 NATE BOWE, PE DATE



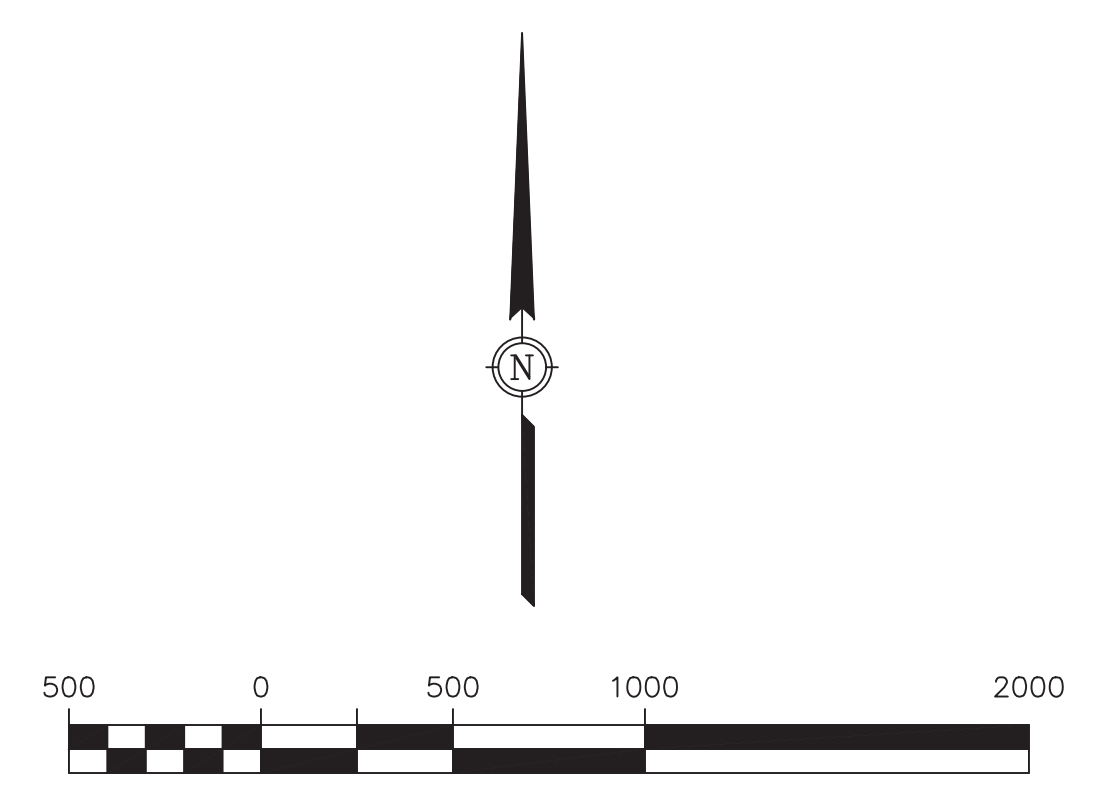
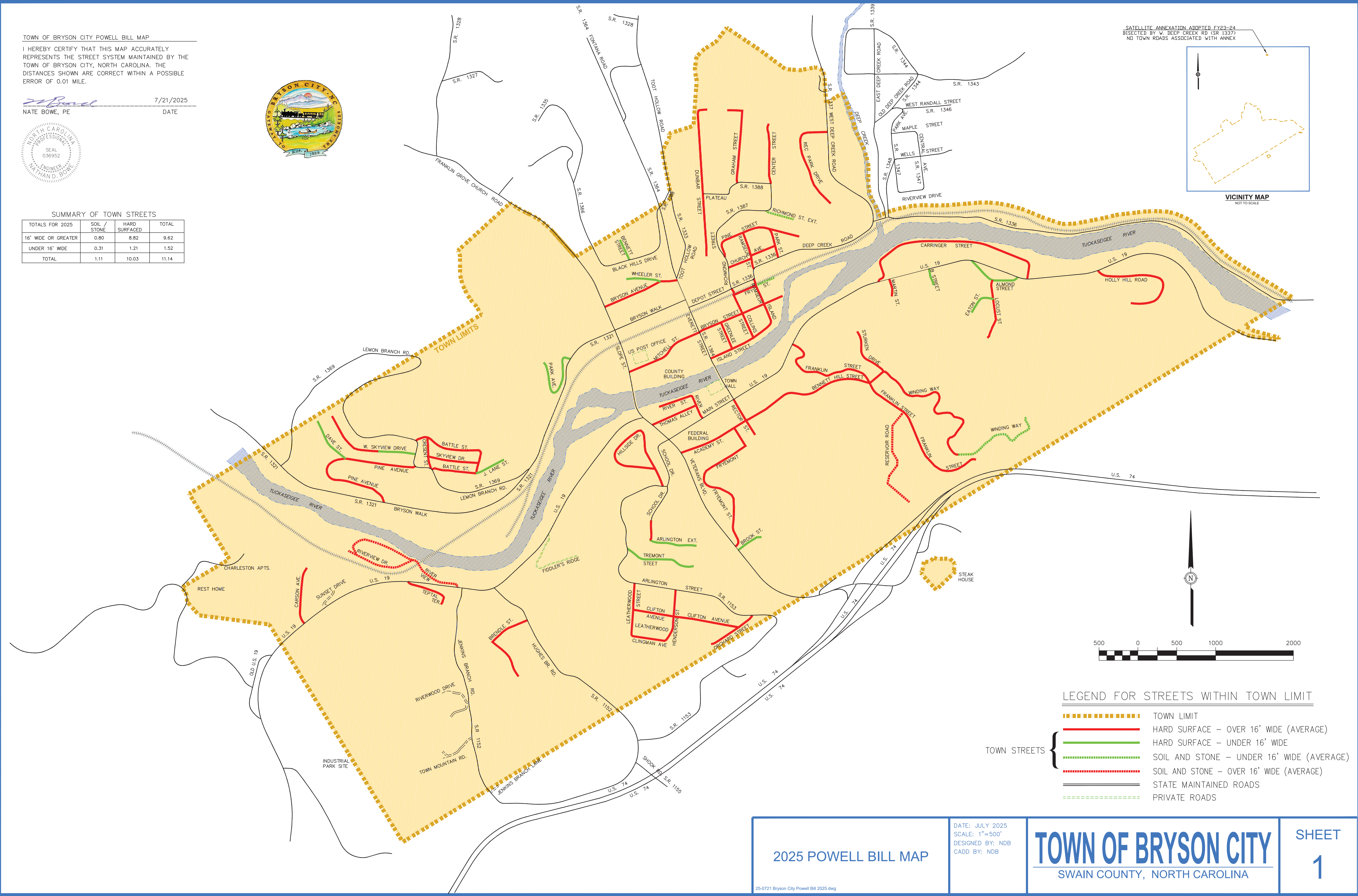
SUMMARY OF TOWN STREETS

TOTALS FOR 2025	SOIL / STONE	HARD SURFACED	TOTAL
16' WIDE OR GREATER	0.80	8.82	9.62
UNDER 16' WIDE	0.31	1.21	1.52
TOTAL	1.11	10.03	11.14

SATELLITE ANNEXATION ADOPTED FY23-24
 BISECTED BY W. DEEP CREEK RD (SR 1337)
 NO TOWN ROADS ASSOCIATED WITH ANNEX



VICINITY MAP
 NOT TO SCALE



LEGEND FOR STREETS WITHIN TOWN LIMIT

- TOWN LIMIT
- HARD SURFACE - OVER 16' WIDE (AVERAGE)
- HARD SURFACE - UNDER 16' WIDE
- SOIL AND STONE - UNDER 16' WIDE (AVERAGE)
- SOIL AND STONE - OVER 16' WIDE (AVERAGE)
- STATE MAINTAINED ROADS
- PRIVATE ROADS

<p>2025 POWELL BILL MAP</p> <p style="font-size: small;">25-0721 Bryson City Powell Bill 2025.dwg</p>	<p>DATE: JULY 2025 SCALE: 1"=500' DESIGNED BY: NDB CADD BY: NDB</p>	<p>TOWN OF BRYSON CITY SWAIN COUNTY, NORTH CAROLINA</p>	<p>SHEET 1</p>
--	--	---	---------------------------